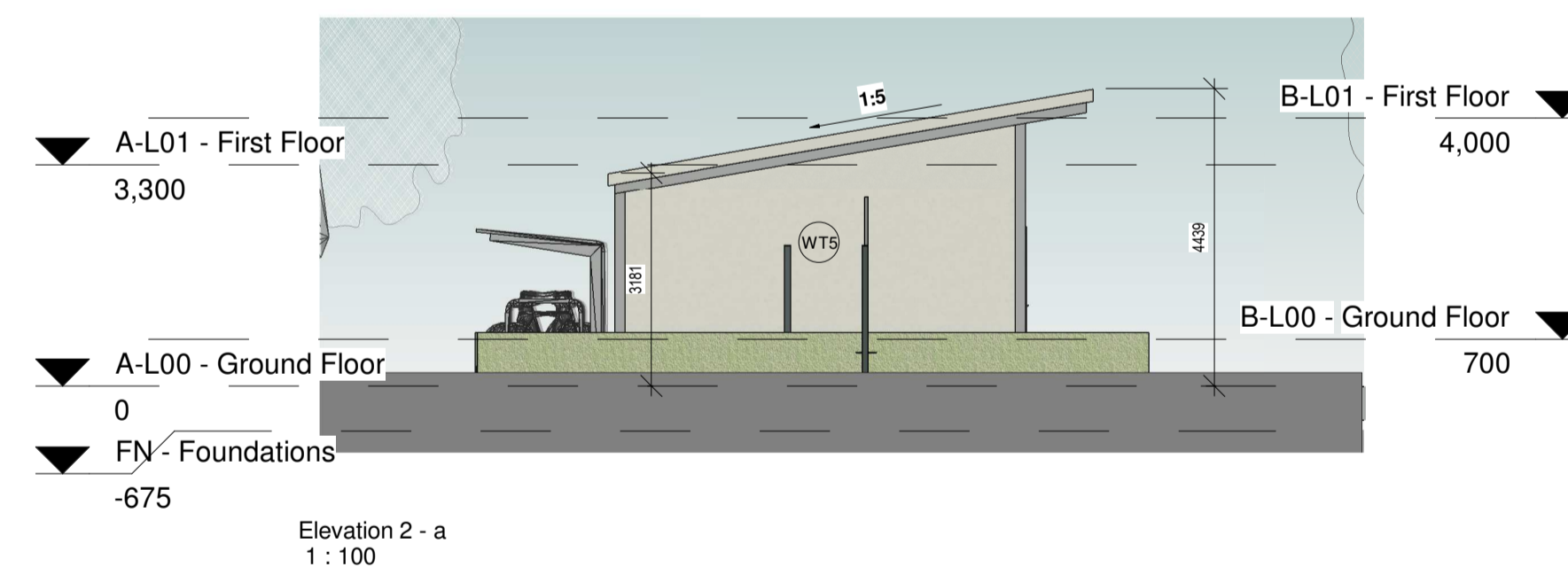
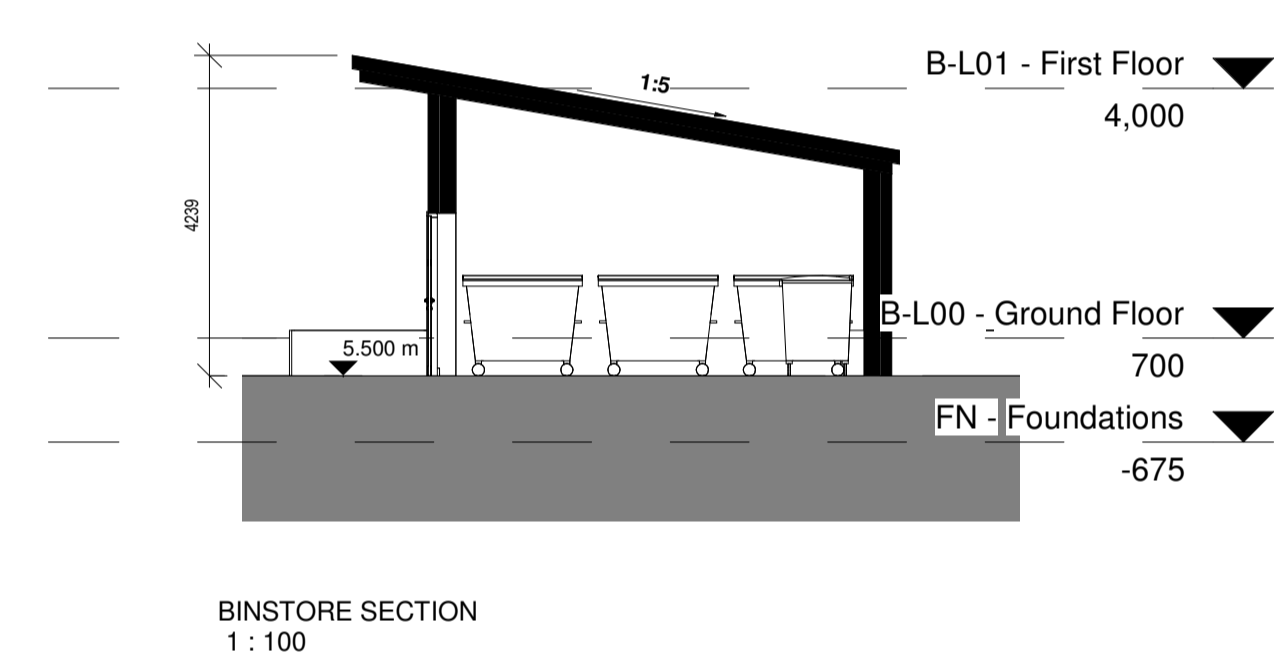
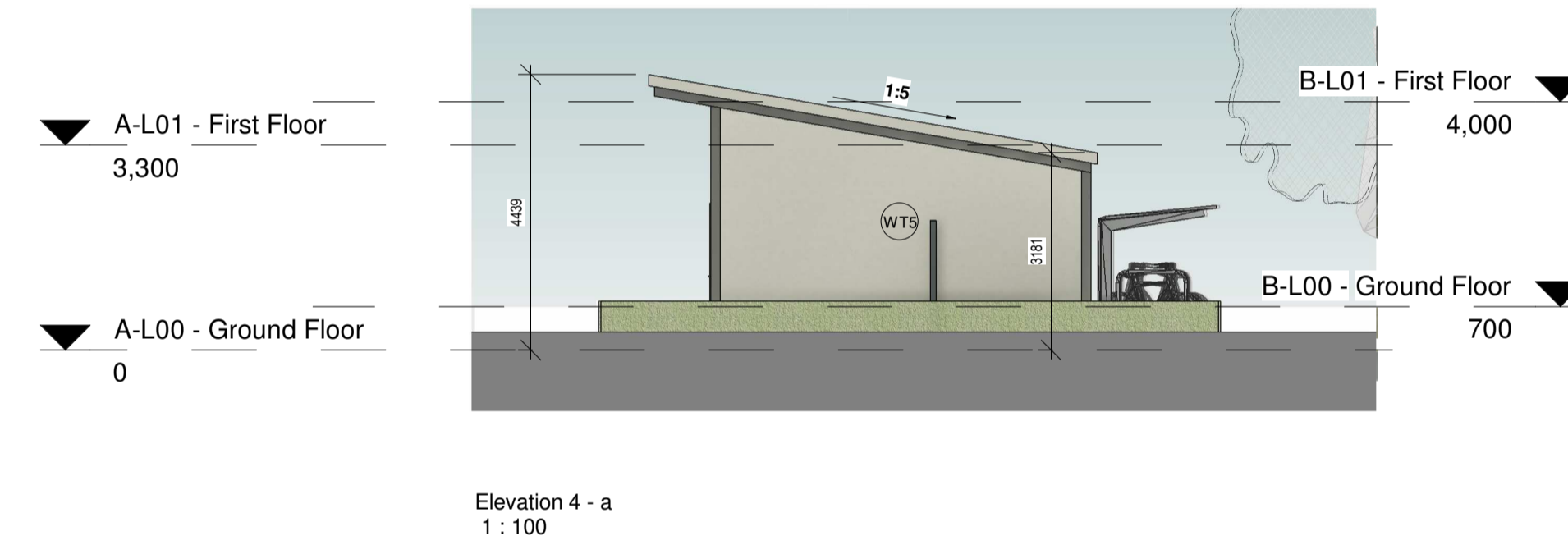
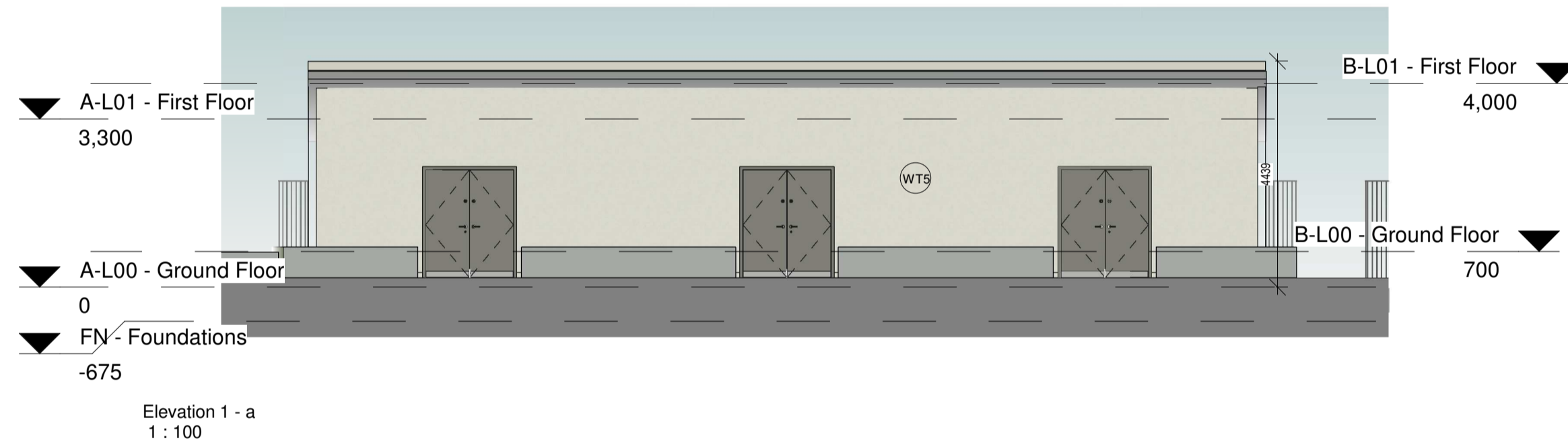


BIN STORE
1 : 100



Notes:
- Do not scale from this drawing. Use figured dimensions in all cases.
- Verify dimensions on site and report any discrepancies to the Architect immediately.
- This drawing is to be read in conjunction with the Architect's Specification.
- © This drawing is copyright and may only be reproduced with the Architect's permission.

Drawing Notes:
Refer to windows, doors and curtain walling schedules for more information on details and types. Refer to all other referenced architectural drawings for more information.
Refer also to all other consultants drawings, specifications, reports and schedules including: Walsh Goodflow for structural and civils, Renaissance for MEP information, JGA for fire strategy information, Ryan & Associates for DAC information, AIT Urbanism & Landscape for landscape plan boundary details & Amplitude Acoustics for Acoustics.

Walls
Selected clay bricks to varying colours as defined in the different character areas as indicated, painted nap sand cement render, exposed plaster bands around external opens / lintels. Concrete or metal cills, lintels or cappings as indicated on elevations.
1 Facing Brick 1 - Red / Brown Blend with flush grey mortar
2 Facing Brick 2 - Grey brick with recessed dark grey mortar
3 Facing Brick 3 - Light Buff brick with recessed grey mortar
4 Random rubble stone cladding
5 Sand / cement nap finish to external leaf of blockwork, paint then applied.

Windows
6 Windows to be aluminium double glazed windows. External doors to be high security impact resistant timber hall doors to EN 1627 and level access threshold to approved colour. Obscure windows to bathrooms and where overlocking adjoining amenity spaces as indicated on elevation drawings.
Roof
7 Bulbouse flat concrete roof tiles, fixed to timber battens on vapour permeable roofing underlay on timber / steel roof structure to a suitable roof pitch manufactured in compliance with E.N. 490: 2005.
8 Low pitch roofs or canopies to be either Single ply membrane Trocal type membranes or select pressed metal roofing with standing seams.
9 Rainwater goods, downpipes etc. to be Aluminium Alloy.
10. Balustrades to be painted mild steel granges
11. Flat roofs to have green roof.

 WT1 Wall Type 1 - Selected dark red brick with grey mortar	 WT2 Wall Type 2 - Selected black brick with grey mortar	 WT3 Wall Type 3 - Selected buff brick with grey mortar
 WT4 Wall Type 4 - Random rubble stone cladding	 WT5 Wall Type 5 - Painted render nap finish	

Issues & Revisions			
Rev.	Date	Drawn	Details of Issue / Revision
A	SEPT 21	A.R.	Issue for Planning



Dartry Mills,
Dartry Road
Dublin 6,
D06 Y0E3

T: +353 (0)1 498 7000
W: www.reddyarchitecture.com
E: info@reddyarchitecture.com

Client Details:
Voyage Property Limited,
Ashbourne Hall,
Dock Road,
Limerick.

Project Details:
Greenpark SHD
Limerick

Drawing Title: Apartment Bin Store & Covered Cycle Store Drawings - Apartment A & B			
Job No. P20-133D	Sheet Size: A1	Scale @A1: 1:50	
Issue Date: SEPT 21	Drawn By: A.Navarro	Reviewed By: M.Freaney	
Status: S02	Purpose of Issue 3.0 Planning Application		
Project-Originator-Zone-Level-Type-Role-Classification-Number 20133-RAU-ZZ-ZZ-DR-A-02.3360			Revision A